



## Bi-Weekly Report May 20, 2020

**Project Name:** Matador Stadium Replacement Project  
**Owner:** SISD – James Pizana, Director of Operations and Facilities  
**Architect(s):** Pfluger Architects – Robyn Popa, Principal; pbGroup – Florin Popa, Principal  
**Contractor:** F.A. Nunnely – Daryl Frye, Superintendent; Preston Jordan, Asst. Superintendent  
**Current Phase:** Construction Administration

### 1) SCHEDULE

- Project is in line to meet the Critical Path schedule (overall project schedule)
- Construction is at approximately 62% complete as of 4/30/2020.

### 2) CURRENT PROJECT STATUS

- **PHASE I:** (Visitor's Side)
  - On-going work on block at concession/restrooms building.
  - Roofing at concessions/restrooms building is complete.
  - Metal soffits at ticket booth is complete.
  - Metal roof at ticket booth is complete.
  - On-going work on electrical drops and plumbing rough-ins.
  - On-going plumbing and electrical work.
  - Bleachers are 99% complete.
  - On-going fencing installation.
  - Continue reviewing and processing product/material submittals.
- **PHASE II:** (Home Side and Track & Field Areas)
  - On-going track surface installation.
  - On-going underground electrical and plumbing at home side concession/restrooms building.
  - Metal roofs are installed in all locations (Ticket Booths, Matador Store, and Press Box)
  - Sheathing and exterior waterproofing is complete at Press Box.
  - Installing rigid insulation on the exterior walls of the Press Box.
  - Started on HVAC work at the Press Box.
  - Masonry screen wall along E. Cedar St. is complete.
  - Started earthwork on sidewalk outside of the stadium along E. Cedar St.
  - On-going metal stud framing in progress at press box.
  - Curtain wall/Storefront systems framing installation is in-progress at the Press Box.
  - On-going CMU wall erection at elevator tower.
  - Pole vault, high-jump, long-jump/triple-jump events are approximately 90% complete (awaiting track surface material for runways).
  - Concrete flatwork is scheduled to be poured at the south end of the stadium on Thursday 5/20/2020.
  - Finishing up the installation of the storm drain at the south end of the stadium.
  - Light pole concrete bases are being installed throughout the project.
  - Continue reviewing and processing product/material submittals.

### 3) OUTLOOK (2 to 3 weeks)

- **PHASE I:** (Visitor's Side)



## Bi-Weekly Report May 20, 2020

- Finish up grandstand aluminum ramps, stairs, rails and fencing.
  - Continue with concession/restrooms building interior work (MEP)
  - Continue with in-wall electrical and plumbing rough-ins.
  - Continue work on exterior block veneer around concession portion
  - Continue work on field light fixtures installation
- **PHASE II: (Home Side and Track & Field Areas)**
- Continue with concession/restrooms underground plumbing/utility rough-ins
  - Work on wall and miscellaneous framing at press box.
  - Start electrical and plumbing rough-ins at press box.
  - Continue with assembling and installing the elevator unit
  - Continue with block work at elevator tower
  - Continue work on the track surface
  - Continue working on other track & field events
  - Start erection of Grandstands
  - Continue work on concrete flatwork

### 4) PHOTOGRAPHS

- Visitors Side Concession/Restrooms – Insulation is complete, and CMU veneer is going up





## Bi-Weekly Report May 20, 2020

- Visitors Side Concession/Restrooms building – View looking north under the bleachers



- Visitors Side Concession/Restrooms building – View of plumbing work







## Bi-Weekly Report May 20, 2020

- Visitors Side Ticket Booth building – Stainless steel countertops are installed



- Press Box – Installing metal furring to receive metal panels.





## Bi-Weekly Report May 20, 2020

- Press Box – exterior sheathing, waterproofing and curtain wall system installation is in progress.



- Home Side Ticket Booths and Matador Spirit Store







## Bi-Weekly Report May 20, 2020

- Elevator Tower – Masonry work



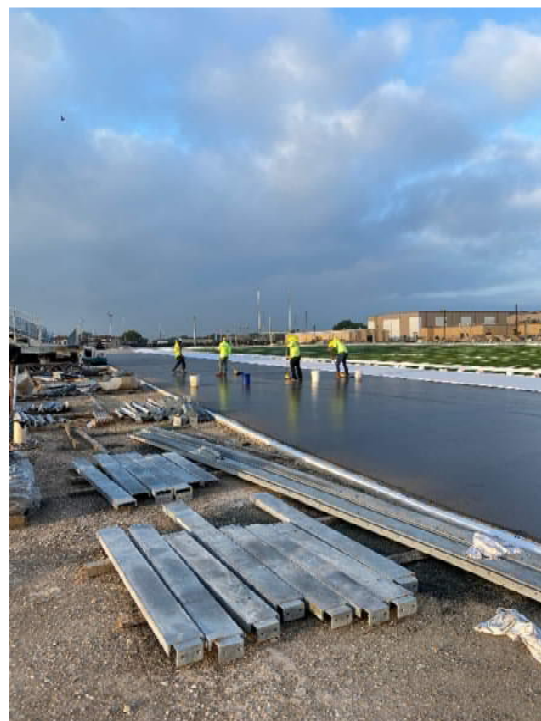
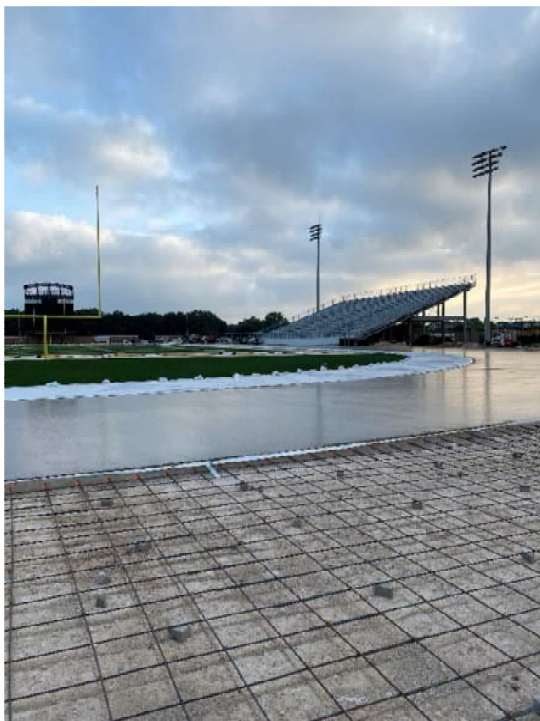
- Home Side Press Box – Framing





## Bi-Weekly Report May 20, 2020

- Track Surface – Mopping in first layer of track surface system





## Bi-Weekly Report May 20, 2020

**Project Name:** AJ Briesemeister MS & Jefferson ES Additions and Renovations  
**Owner:** SISD – James Pizana, Director of Operations and Facilities  
**Architect(s):** Pfluger Architects – Robyn Popa, Principal; pbGroup – Florin Popa, Principal  
**Contractor:** NA  
**Current Phase:** Design Development

### 1) AJ Briesemeister MS

- The Design Team Completed and issued 100% DD package to the District. Scheduling of the 100% DD review meetings with the District is in progress. The meetings will take place the week of 5/25/2020.
- Design team proposed design modifications to address overages on the cost estimates have been incorporated in the 100% DD.
- Phasing plan has been reviewed with the District and the Campus; adjustments have been made, and the Campus has developed a usage plan for the 2020/2021 school year, to plan for the start of construction in spring 2021.
- On-going efforts related to surveying/verification of existing site/building conditions.
- Geotechnical Report has been completed and received by the Team.
- In-progress of scheduling Water Pressure Test.
- Design team is continuing coordination with consultants and Owner for the next milestone.
- Based on the project schedule, the 100% DD package will be presented to the Board, for information only, on 5/26/2020.
- The Design Team and the District will schedule a preliminary review meeting with the City of Seguin shortly after the 100% DD package is reviewed and approved by the District. There are no set dates as of yet. Discussion points with City of Seguin will be focused on construction phasing and plan review/submittal protocol (tentative agreement with City of Seguin to allow the project to be submitted by the design team, and not the contractor).
- The Design Team and the District will schedule a preliminary review meeting with TXDoT shortly after the 100% DD package is reviewed and approved by the District. There are no set dates as of yet. Discussion points with TXDoT will be focused on site access from Hwy 123 and the potential for adding turning lanes.
- The Design Team is continuing work in preparation for the next milestone of 50% CD package for July 31, 2020.

### 2) Jefferson ES

- Based on the project schedule, the 50% DD package will be submitted on 5/22/2020, with the review to be scheduled May 25.
- On-going efforts related to surveying/verification of existing site/building conditions.
- Proposal for the Geotechnical Engineering services is in progress.



## Playground Project update 5/20/2020

Rodriguez is complete.



**McQueeney is complete.**





**Patlan is 99% complete. Some concrete clean-up work still needs to be completed.**





**Jefferson concrete and flat work is complete. Equipment installation has started.**



**Koennecke concrete curbing and sidewalk work is complete. Base material has been added and leveled to prepare the site for the equipment installation.**





**Vogel concrete curbing and sidewalk work is complete. Base material has been added and leveled to prepare the site for the equipment installation.**





**Weinert's old playground has been removed. Concrete forms for curbing and sidewalks is in place.**

